

# TIIG

INJURY SURVEILLANCE IN THE NORTH WEST OF ENGLAND

## Alder Hey Children’s Hospital Emergency Department Monthly Bulletin: October 2012 to September 2013

This bulletin provides a breakdown of injury attendances to Alder Hey Children’s Hospital Emergency Department (ED) between October 2012 and September 2013.

Between October 2012 and September 2013 there were 17,545 ED injury attendances. The peak month for injury attendance was July (n=1,876), with December (n=1,042) accounting for the fewest. For each month there were more male (56%) injury attendances than female presenting at Alder Hey ED; patients aged 10 to 14 years (35%) were the largest age group of injury attendances, followed by the under 5s (34%), (Figures 1 and 2).

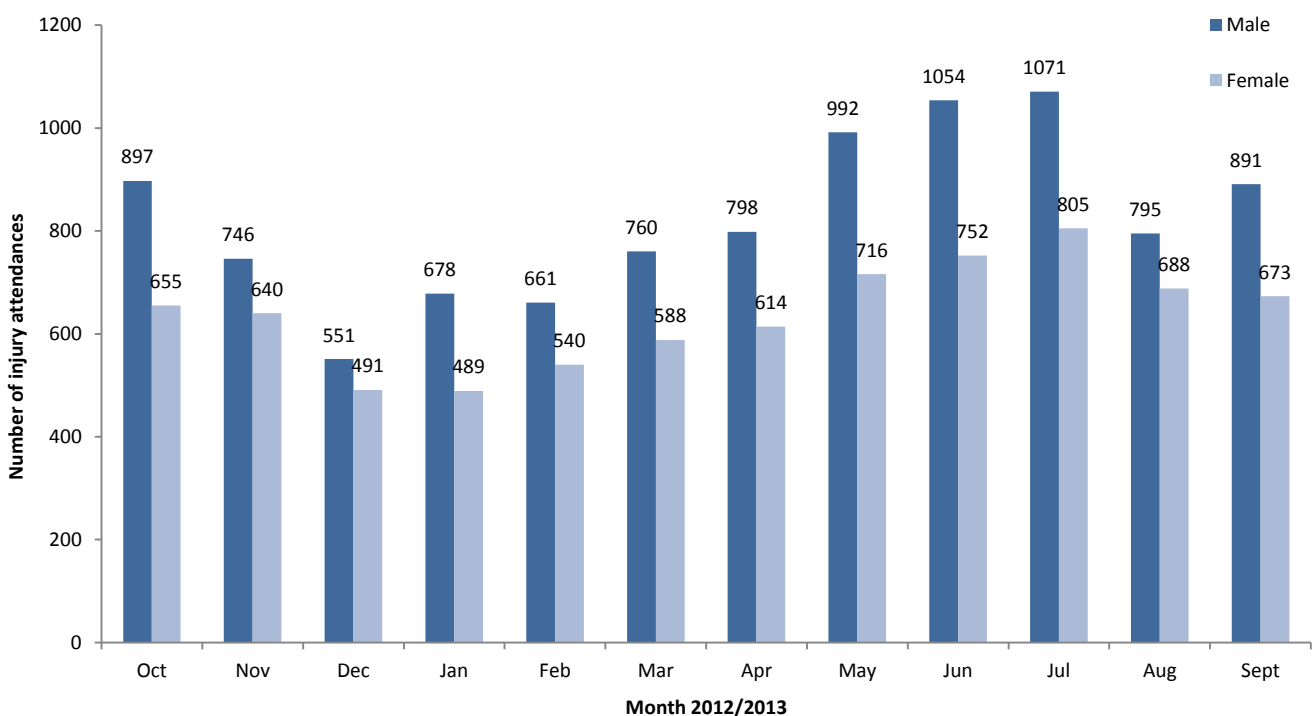
The majority (94%) of injury attendances between October 2012 and September 2013 were recorded as other injury. This can cover incidents such as a body injury or laceration (Table 1).

**Table 2** illustrates the location where other injuries occurred. Over two-fifths of injuries occurred in the home (45%), whilst 18% occurred in an education establishment and 15% in a public place.

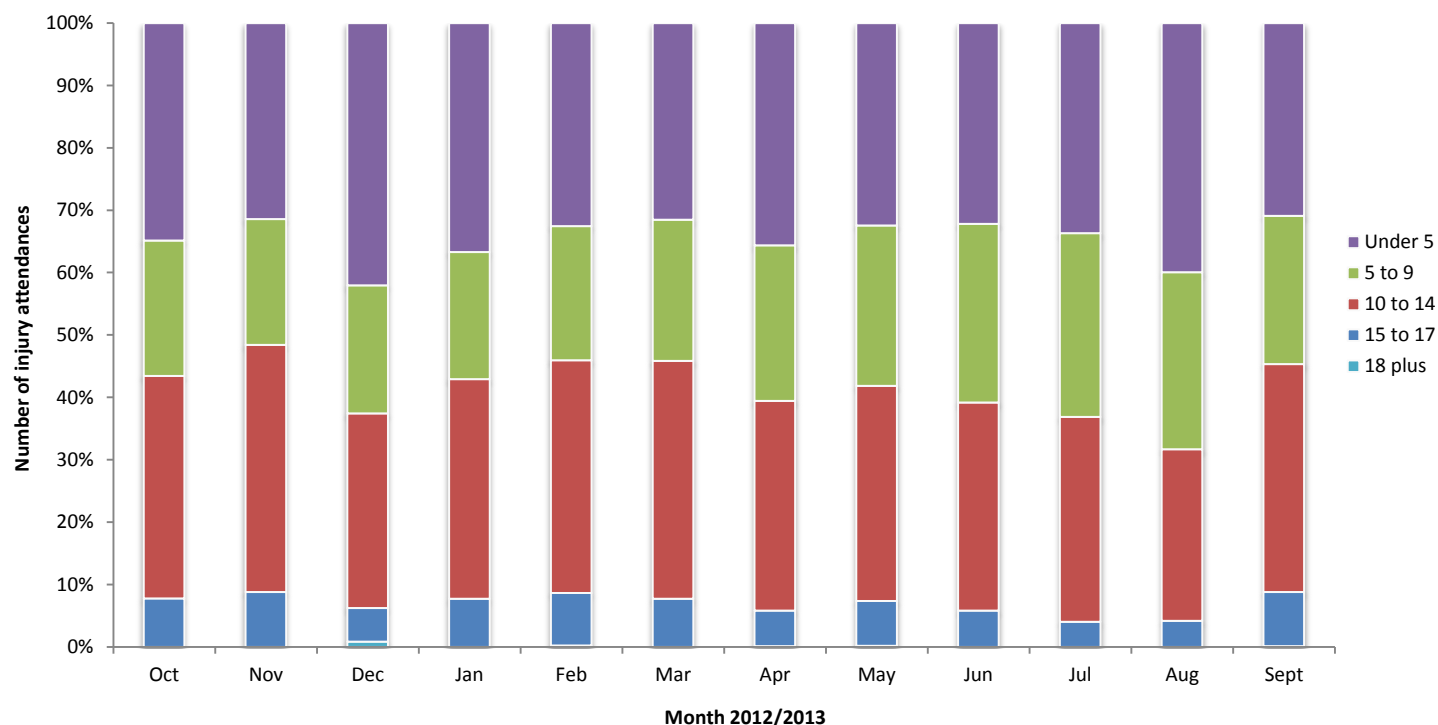
**Table 3** illustrates the discharge method of injury attendances. Over two-thirds (67%) of all injury attendances were discharged.

There were 204 assault attendees presenting at Alder Hey Children’s Hospital ED between October 2012 and September 2013; these were mainly male (67%) and aged between 15 to 17 years (44%). The primary location of assaults was recorded as a public place (47%).

**Figure 1: Gender of injury attendances by month, October 2012 to September 2013**



**Figure 2: Age group of injury attendances by month, October 2012 to September 2013**



**Table 1: Injury attendances by injury group, October 2012 to September 2013<sup>1,2</sup>**

Injury group	Oct	Nov	Dec	Jan	Feb	Mar	Apr	May	Jun	Jul	Aug	Sept	Total	%
Other injury	1455	1292	955	1072	1113	1251	1329	1608	1712	1795	1382	1451	16415	94
Maxillary/facial	20	30	24	27	22	27	23	30	29	20	17	33	302	2
Road traffic collision	26	32	13	22	22	30	23	32	29	22	21	28	300	2
Assault	15	16	21	29	16	16	16	11	11	10	21	22	204	1
Ingestion - accidental	22	13	15	10	16	11	8	10	9	8	16	16	154	1
Bite/sting	6	***	6	***	***	***	7	10	10	<20	18	<15	97	1
Ingestion - deliberate	8	***	8	***	<15	<10	6	7	6	***	8	***	73	0
<b>Total</b>	<b>1552</b>	<b>1386</b>	<b>1042</b>	<b>1167</b>	<b>1201</b>	<b>1348</b>	<b>1412</b>	<b>1708</b>	<b>1806</b>	<b>1876</b>	<b>1483</b>	<b>1564</b>	<b>17545</b>	<b>100</b>

**Table 2: Other injury attendances by location of incident, October 2012 to September 2013<sup>1,2</sup>**

Other injury location	Oct	Nov	Dec	Jan	Feb	Mar	Apr	May	Jun	Jul	Aug	Sept	Total	%
Home	628	557	533	529	500	523	620	688	768	819	660	506	7331	45
Education establishment	324	344	189	216	219	337	178	309	302	257	16	274	2965	18
Public place	216	160	82	146	153	167	206	274	290	335	314	191	2534	15
Other	102	83	84	93	108	97	110	134	119	143	213	234	1520	9
Sport	127	109	37	49	84	89	122	120	111	113	64	150	1175	7
Street	14	***	***	9	13	5	26	20	44	53	53	50	294	2
Indoors	20	19	10	13	15	16	18	22	16	8	13	6	176	1
Playground	7	***	***	***	***	***	22	18	30	31	27	21	172	1
Road traffic collision	11	7	7	7	<10	***	14	12	15	17	10	8	117	1
Bouncy castle	***	***	***	***	***	***	***	***	8	10	8	5	42	0
Semi-public party	***	***	***	***	***	***	6	***	5	***	***	***	21	0
Hospital	***	***	***	***	***	***	***	***	***	***	***	***	<20	0
Leisure park	***	***	***	***	***	***	***	***	***	***	***	***	***	0
<b>Total</b>	<b>1451</b>	<b>1288</b>	<b>951</b>	<b>1069</b>	<b>1105</b>	<b>1246</b>	<b>1326</b>	<b>1607</b>	<b>1709</b>	<b>1788</b>	<b>1379</b>	<b>1447</b>	<b>16366</b>	<b>100</b>

<sup>1</sup> Please note that in all tables all numbers less than five have been suppressed in line with patient confidentiality and if there is only one number less than five in a category then two numbers will be suppressed at the next level (e.g. <6) in order to prevent back calculations from totals.

<sup>2</sup> There were 49 deliberate self-harm attendances during this period. To maintain patient confidentiality these have been categorised under other injury. Please note these attendances are not included in Table 2.

**Table 3: Injury attendances by discharge method, October 2012 to September 2013<sup>3</sup>**

Discharge method	Oct	Nov	Dec	Jan	Feb	Mar	Apr	May	Jun	Jul	Aug	Sept	Total	%
Home/discharged	1017	963	709	783	815	882	950	1112	1145	1262	1005	1067	11710	67
Fracture clinic - Alder Hey	167	130	88	102	123	136	138	201	220	213	159	168	1845	11
Re-dressing clinic	122	90	79	105	88	124	105	124	132	130	106	105	1310	7
General Practitioner	89	74	43	48	49	67	83	84	124	72	45	45	823	5
Other	30	28	34	26	37	26	44	43	53	58	48	36	463	3
ED observation area	22	33	29	25	24	31	18	29	28	32	22	26	319	2
Outpatient other	19	16	15	22	16	18	15	27	12	32	27	25	244	1
Admitted plastics	15	7	7	9	10	<10	19	27	26	***	19	19	168	1
Admitted to orthopaedic	16	11	***	11	9	<10	15	18	17	21	24	13	167	1
Admitted other	18	***	***	14	7	13	***	10	13	11	11	15	120	1
Community nurse, health visitor, district nurse, midwife	11	8	5	8	8	7	***	7	7	8	***	5	79	0
Maxillary/facial	6	***	6	***	***	6	***	5	5	13	***	15	71	0
Ear nose and throat - out patient department	6	6	7	***	***	5	6	5	6	8	***	8	66	0
Plastic surgery	7	8	***	***	***	7	***	7	6	5	***	***	50	0
Dentist (own)	***	***	***	***	***	5	***	***	5	***	***	***	36	0
Left before treatment	***	***	***	***	***	***	***	***	***	***	***	***	27	0
Surgical or medical follow-up	***	***	***	***	***	***	***	***	***	***	***	6	22	0
Refer to other hospital	***	***	***	***	***	***	***	***	***	***	***	***	16	0
Central admissions	***	***	***	***	***	***	***	***	***	***	***	***	9	0
<b>Total</b>	<b>1552</b>	<b>1386</b>	<b>1042</b>	<b>1167</b>	<b>1201</b>	<b>1348</b>	<b>1412</b>	<b>1708</b>	<b>1806</b>	<b>1876</b>	<b>1483</b>	<b>1564</b>	<b>17545</b>	<b>100</b>

Published November 2013

Jennifer Brizell (TIIG researcher)

Centre for Public Health, Faculty of Education, Health and Community, Liverpool John Moores University  
2<sup>nd</sup> Floor, Henry Cotton Campus, 15-21 Webster Street, Liverpool, L3 2ET

Tel: 0151 231 4500 Email: [j.s.brizell@ljmu.ac.uk](mailto:j.s.brizell@ljmu.ac.uk)

Website: [www.tiig.info](http://www.tiig.info) (please note all data requests should be made through the TIIG website)

Twitter: @TIIG\_CPH

<sup>3</sup> Please note that in all tables all numbers less than five have been suppressed in line with patient confidentiality and if there is only one number less than five in a category then two numbers will be suppressed at the next level (e.g. <6) in order to prevent back calculations from totals.